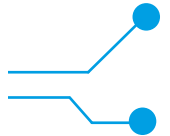
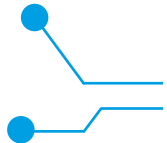


# Symposium

## Maritime Single Window 2024



## PANEL 5:

### PORT CALL DATA REQUIREMENTS & DATA QUALITY

A port call brings together administrative, nautical and operational information between ships and shore. In this session attendees will gain a comprehensive understanding of the entire port call process as defined in the IMO MSW guidelines as well as the importance of data quality in efficiently handling the port call process, including clearances.

#### MODERATOR



**Victor Shieh**

Communications Director  
IAPH

#### SPEAKER



**Ben van Scherpenzeel**

Chairman International  
Taskforce Port Call  
Optimization

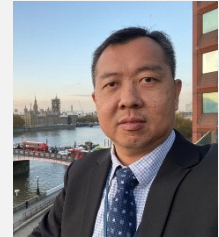
#### SPEAKER



**Andreas Van Der Wurff**

AP Moller Maersk's  
Port Call Optimisation  
Manager

#### SPEAKER



**Gavin Yeo**

Deputy Director (Sectoral  
Systems Development)  
Maritime and Port Authority of  
Singapore (MPA)

# Port Call Process

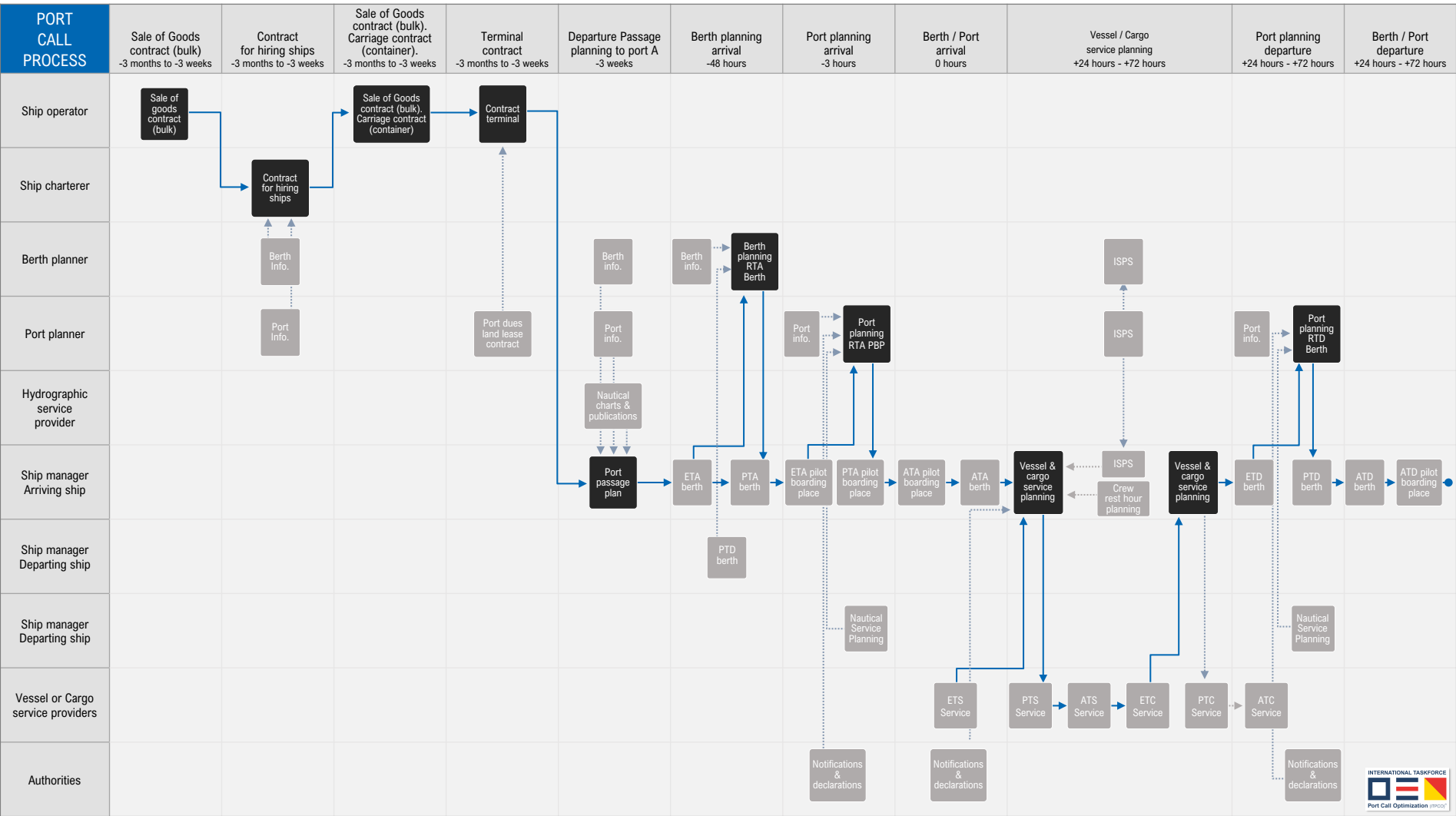
Ben van Scherpenzeel

Chairman

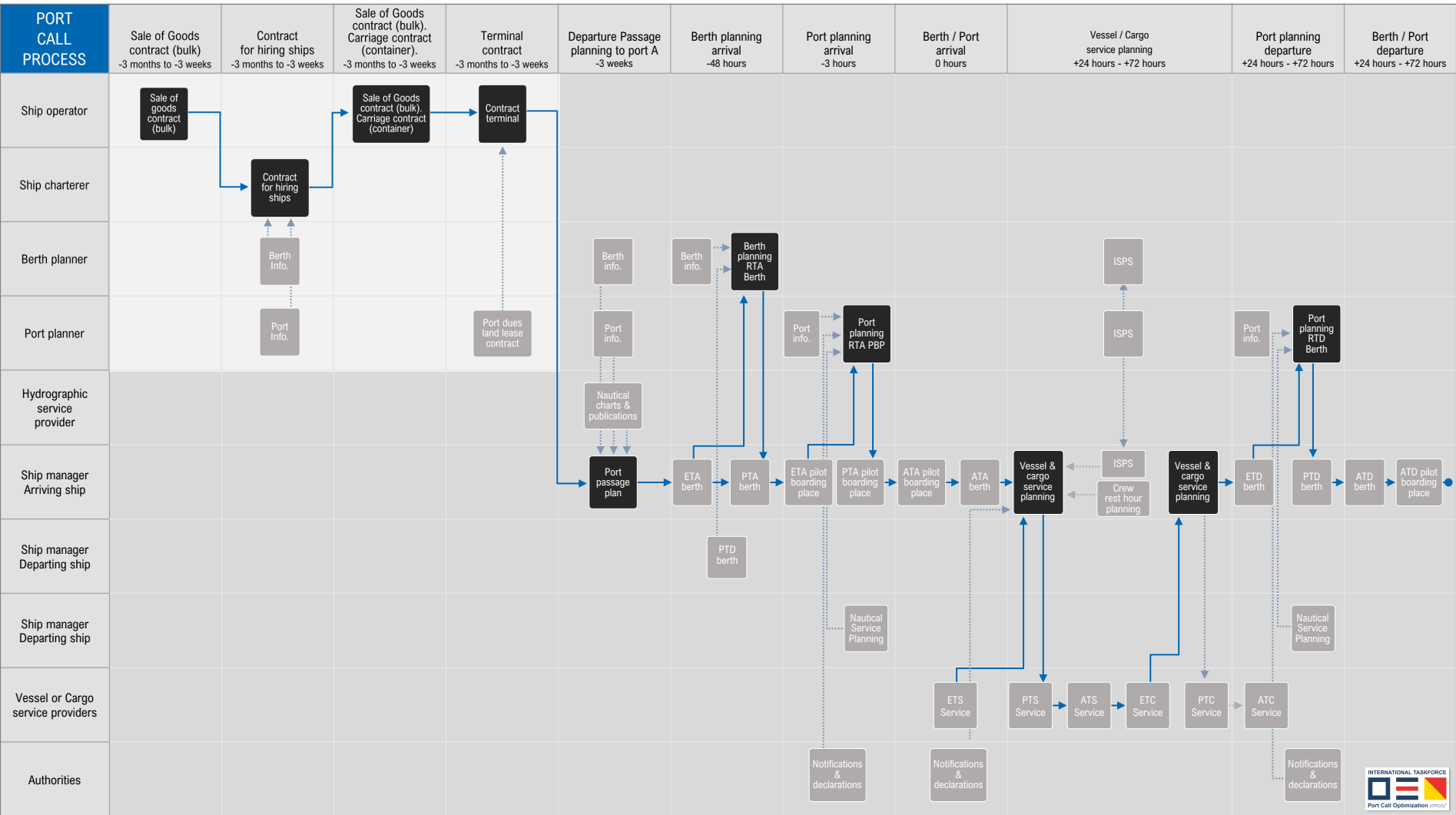
INTERNATIONAL TASKFORCE

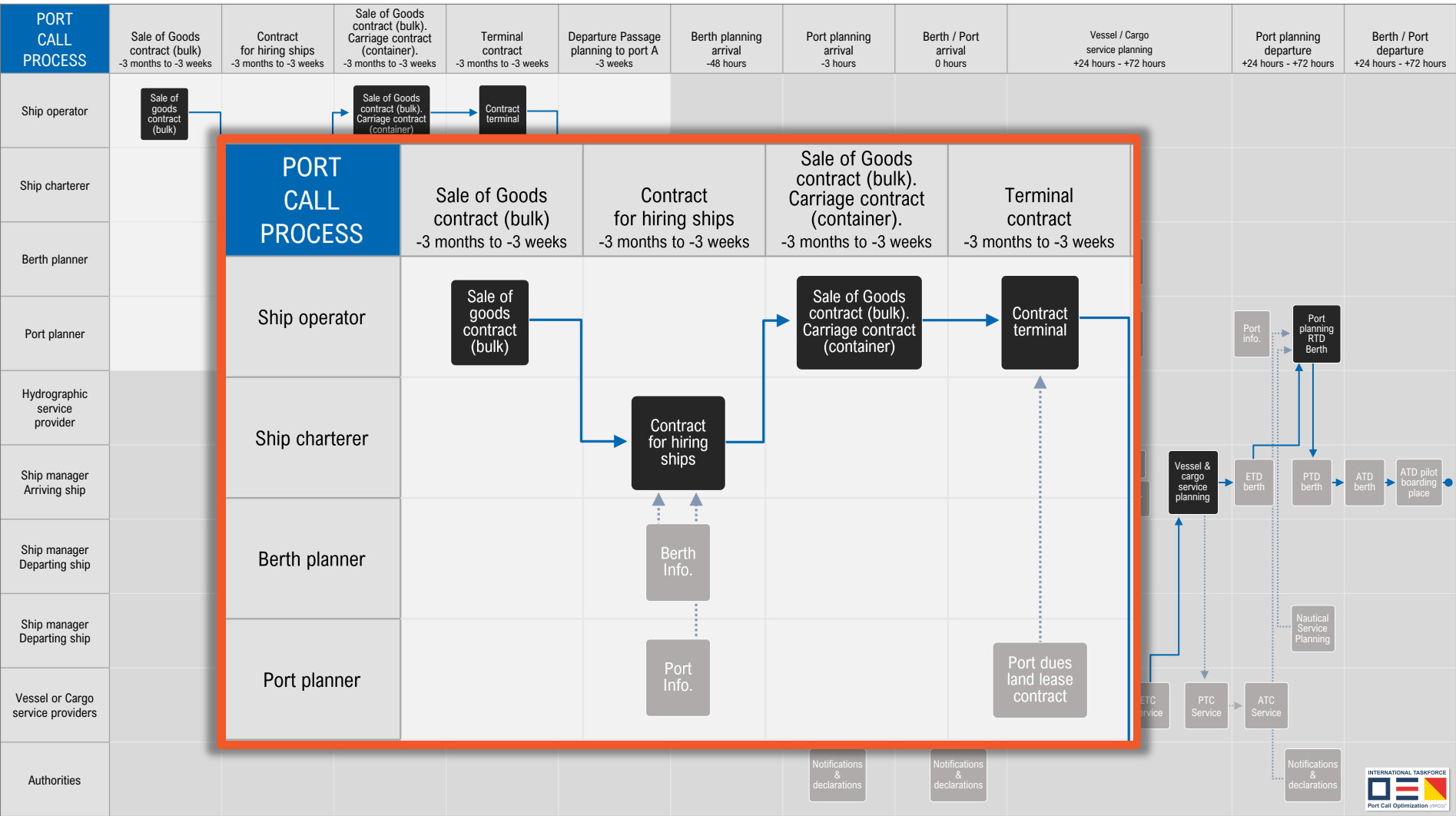


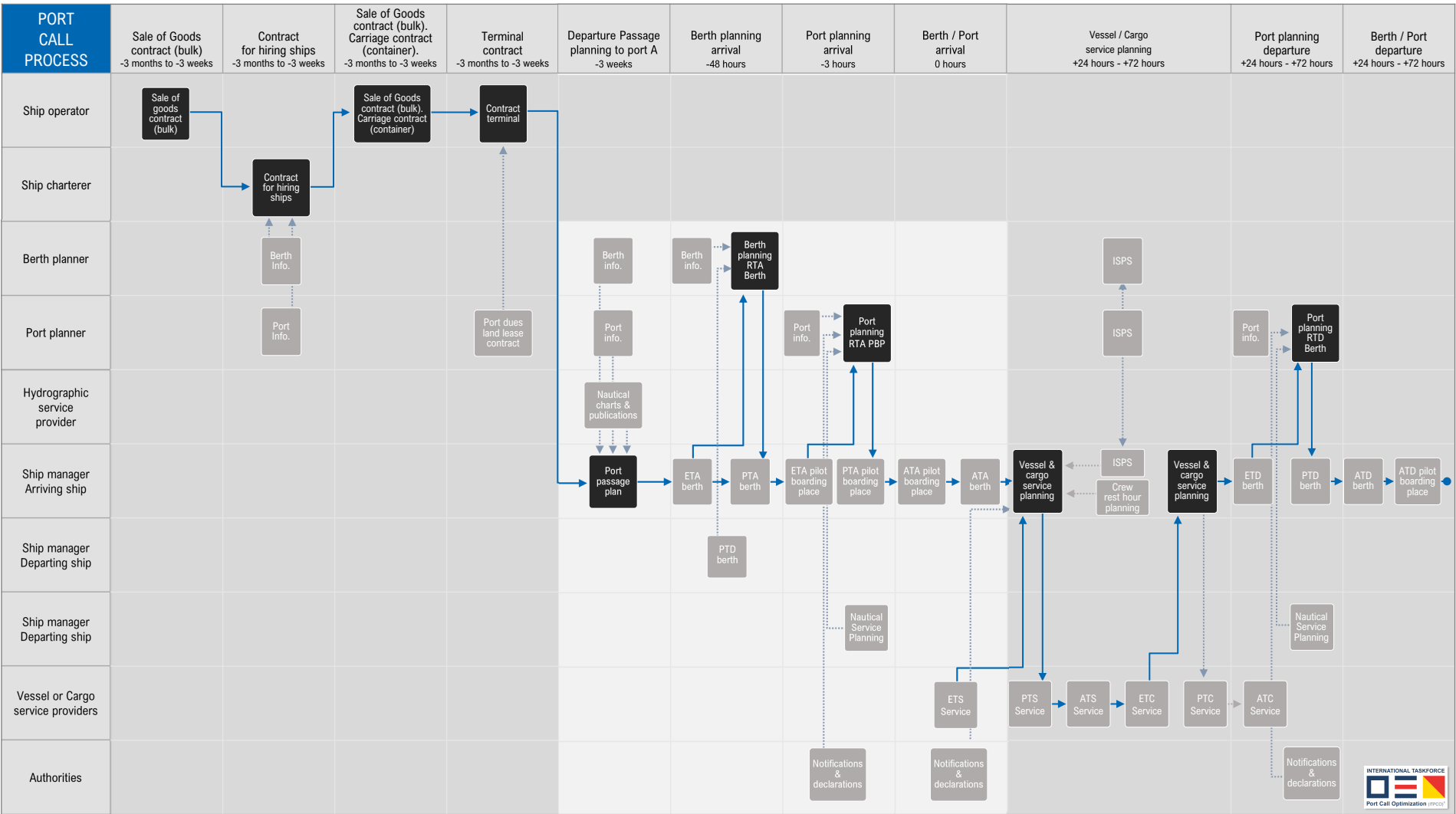
Port Call Optimization (ITPCO)<sup>®</sup>

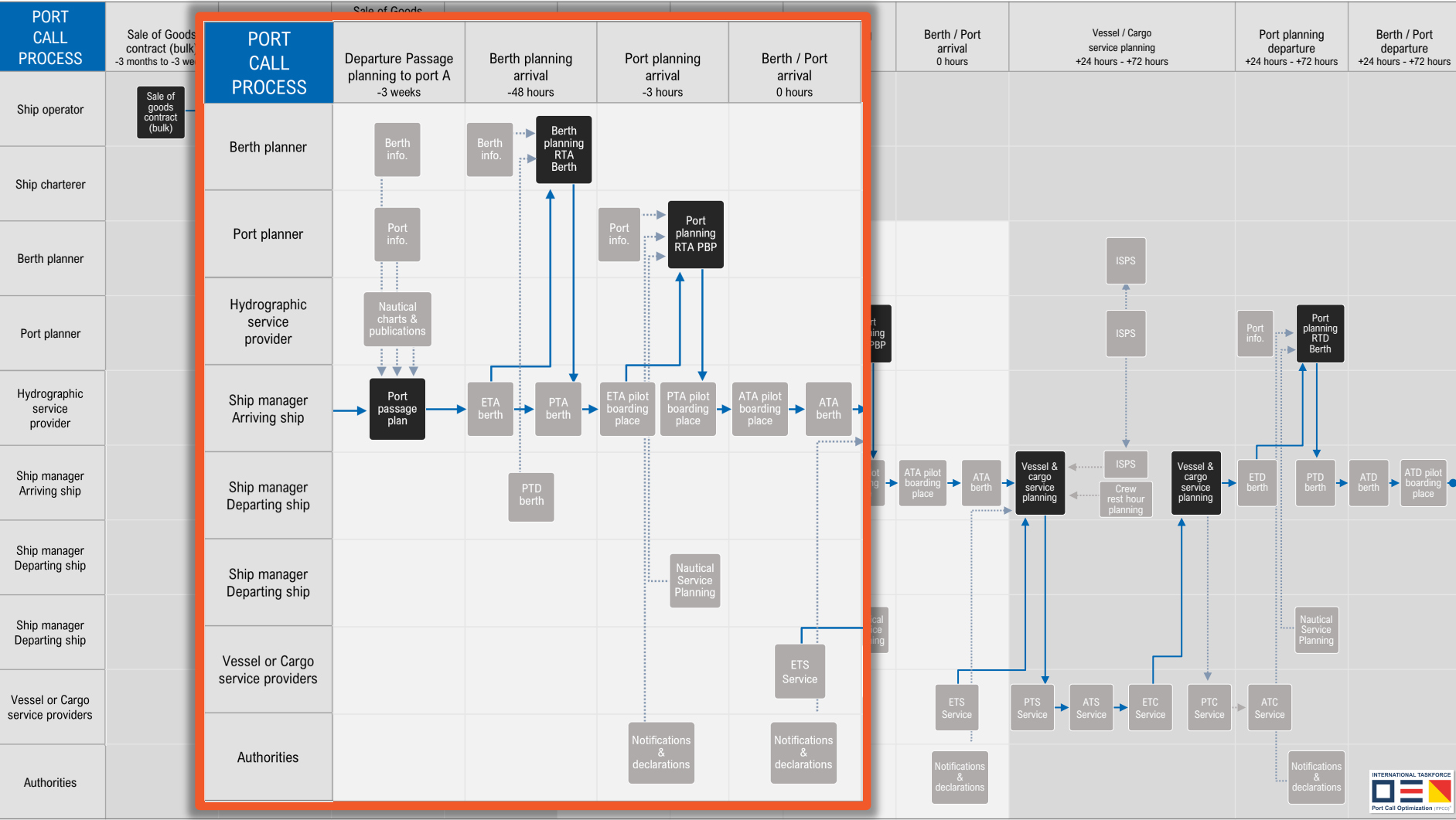


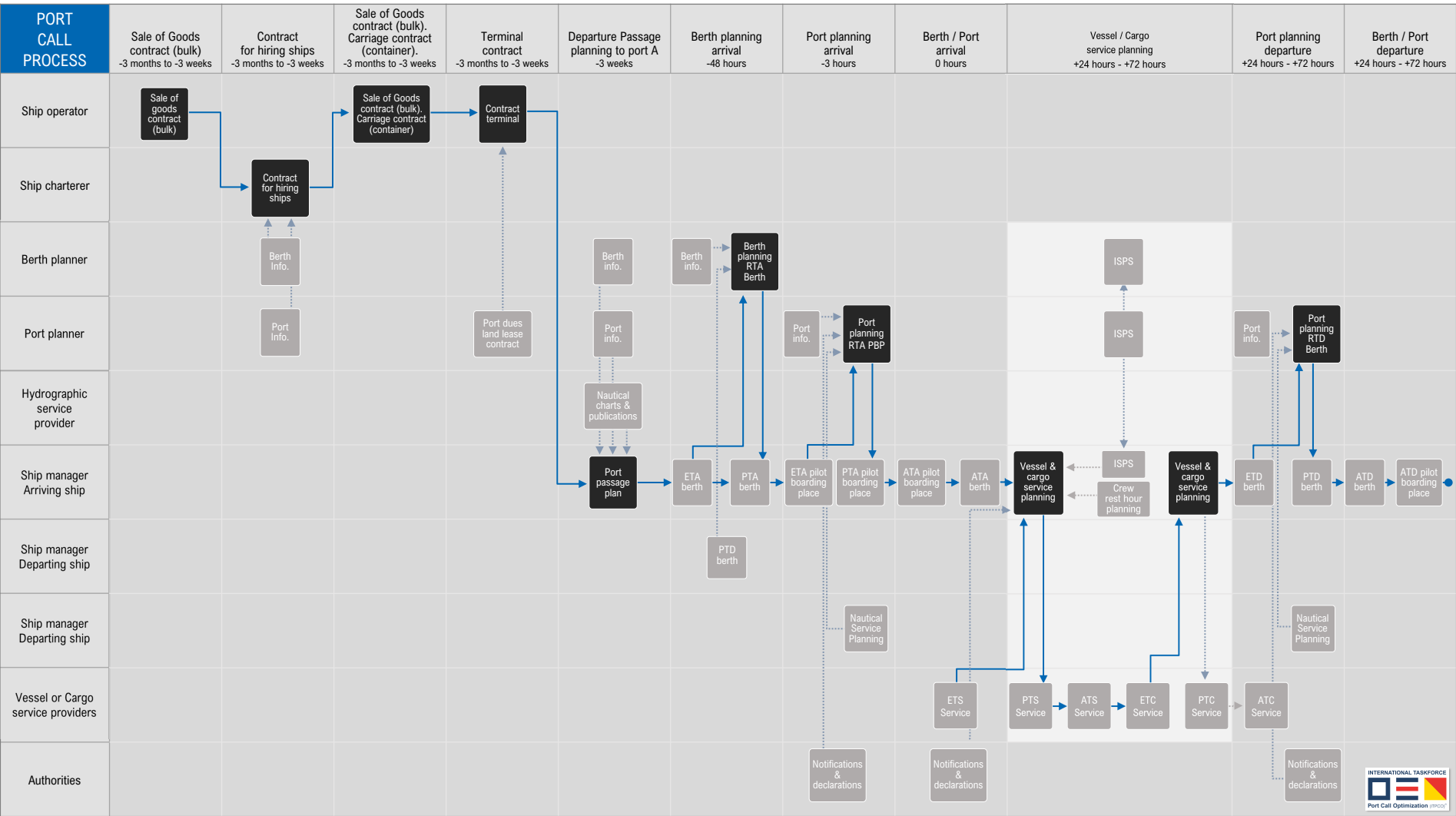




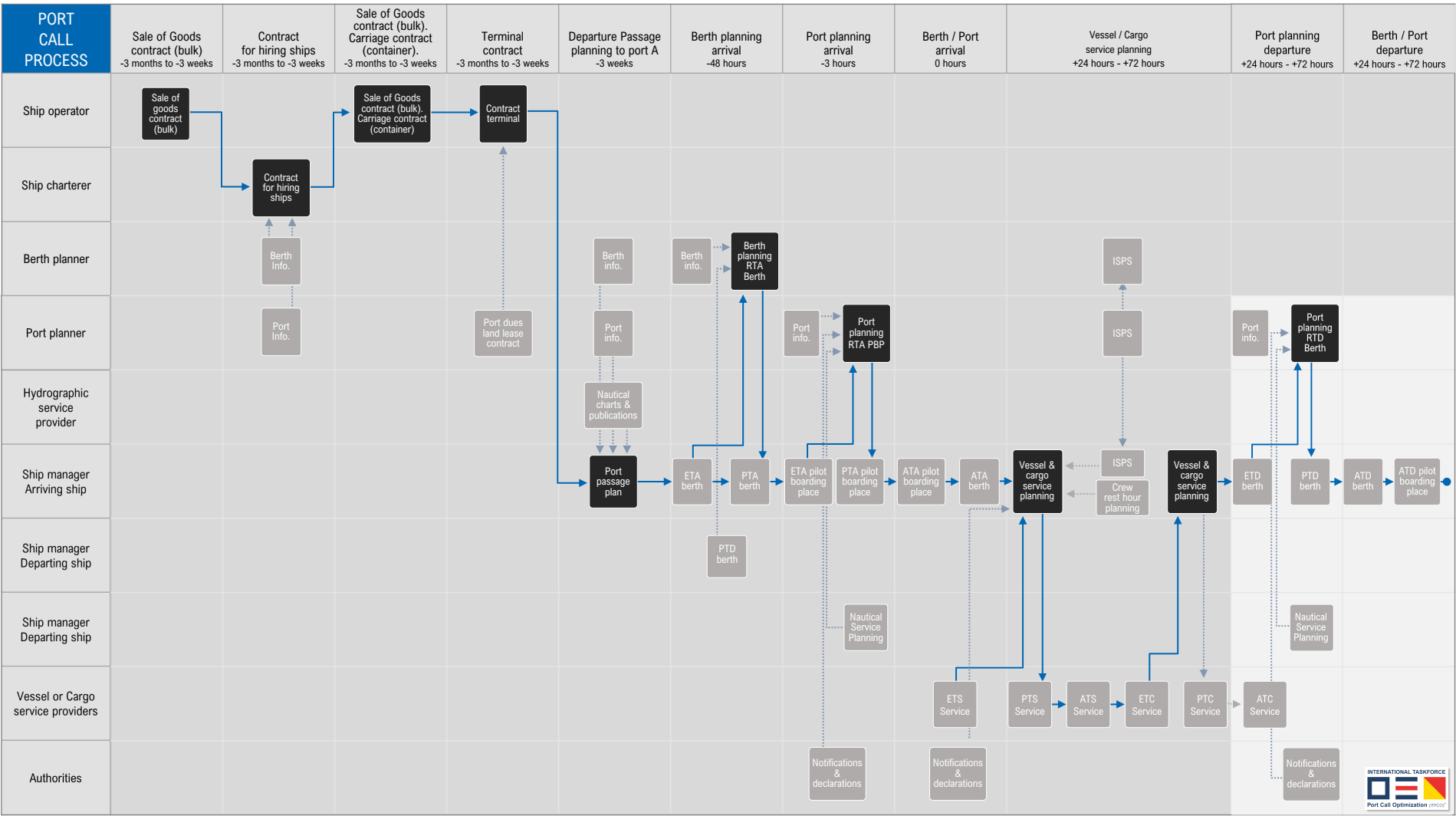










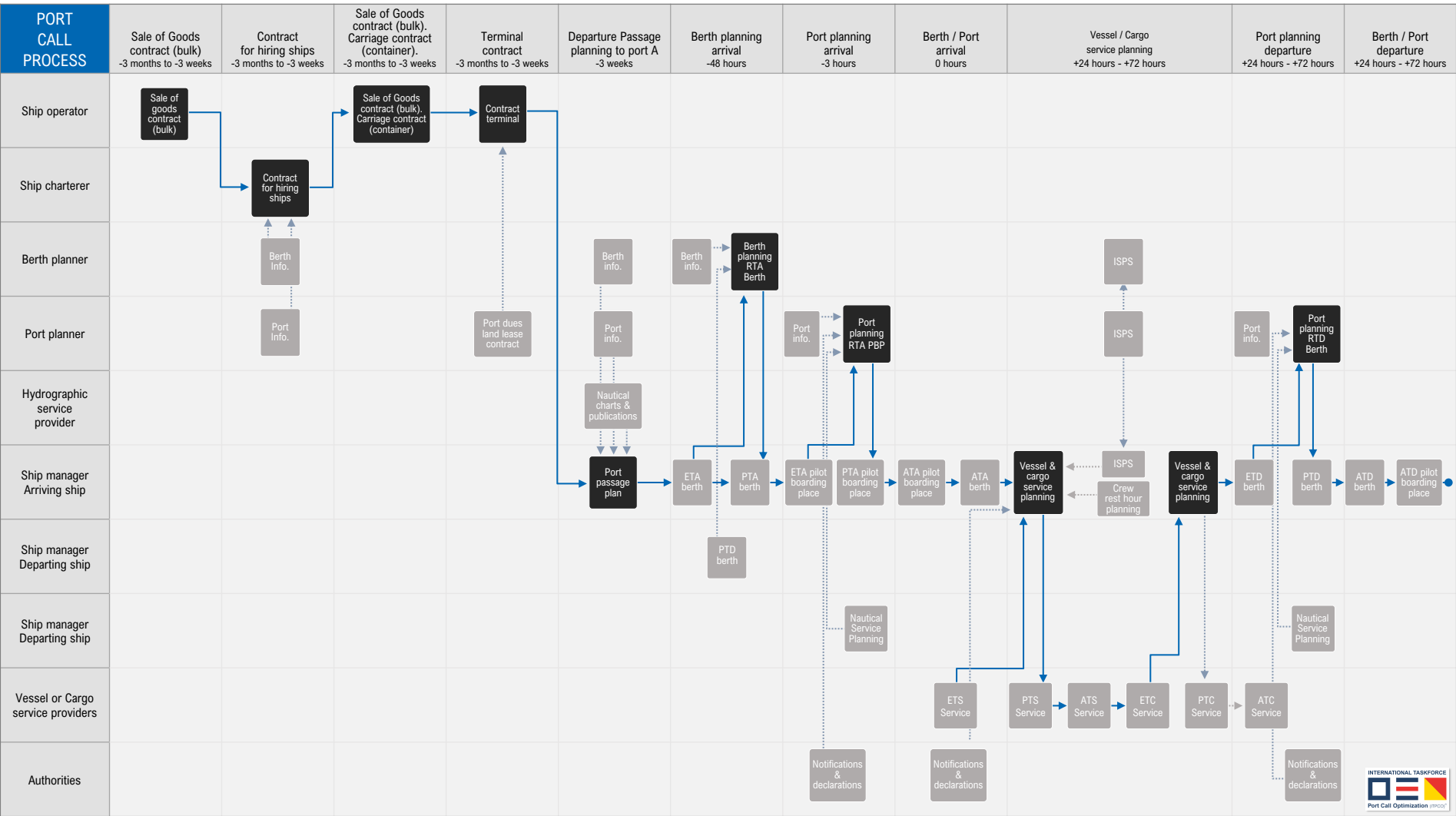


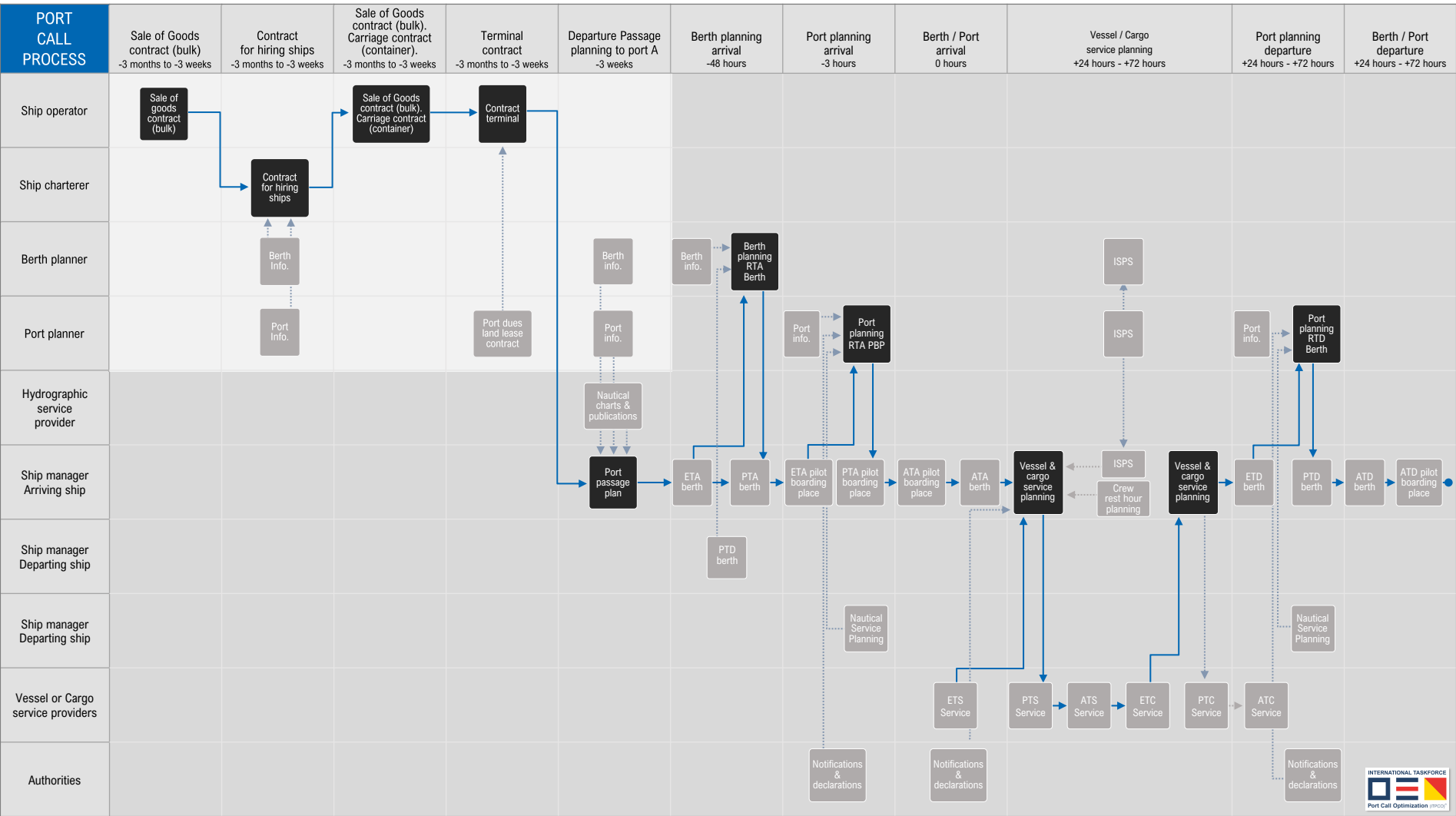


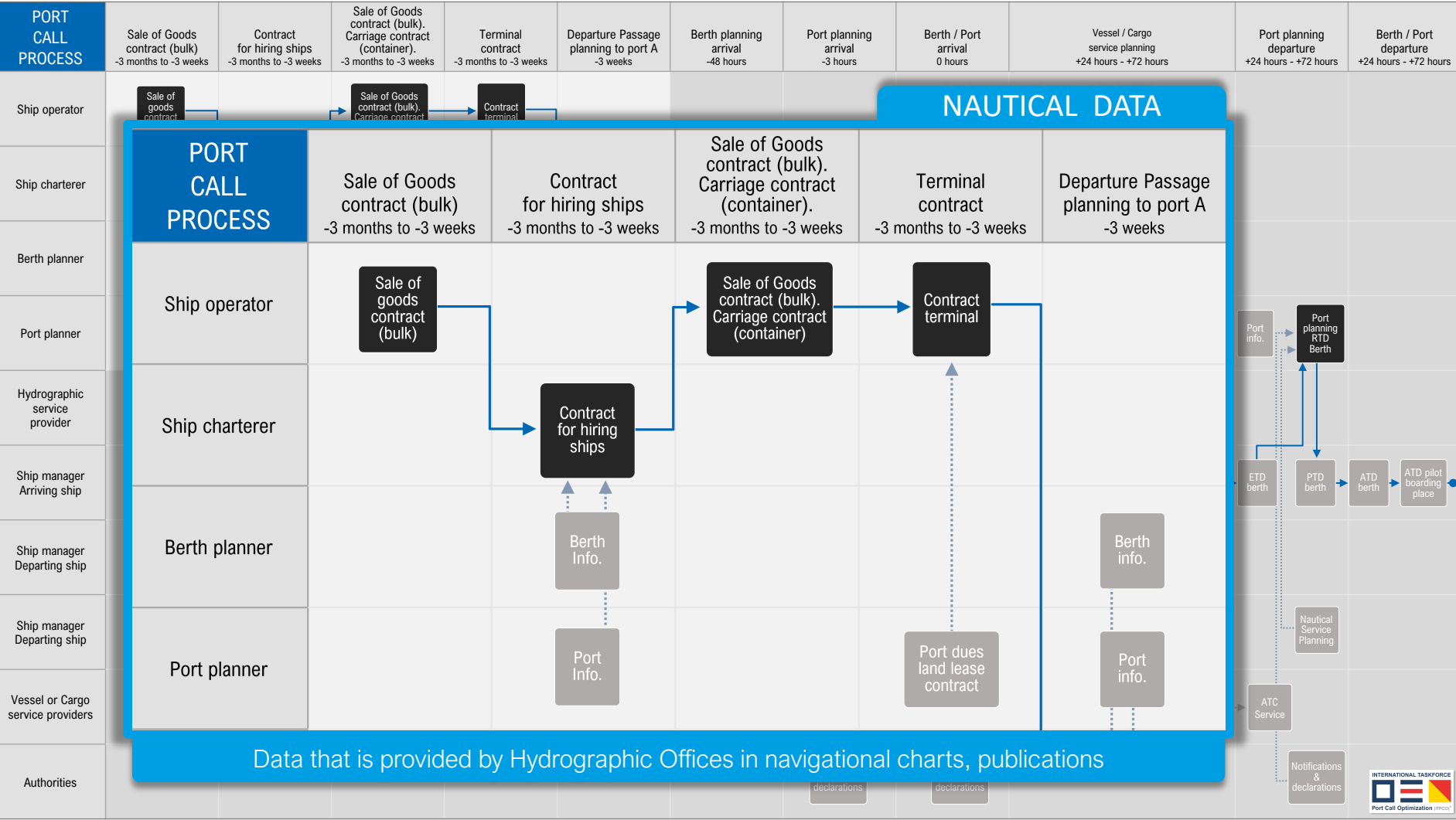


# Port Call Process Data Sets



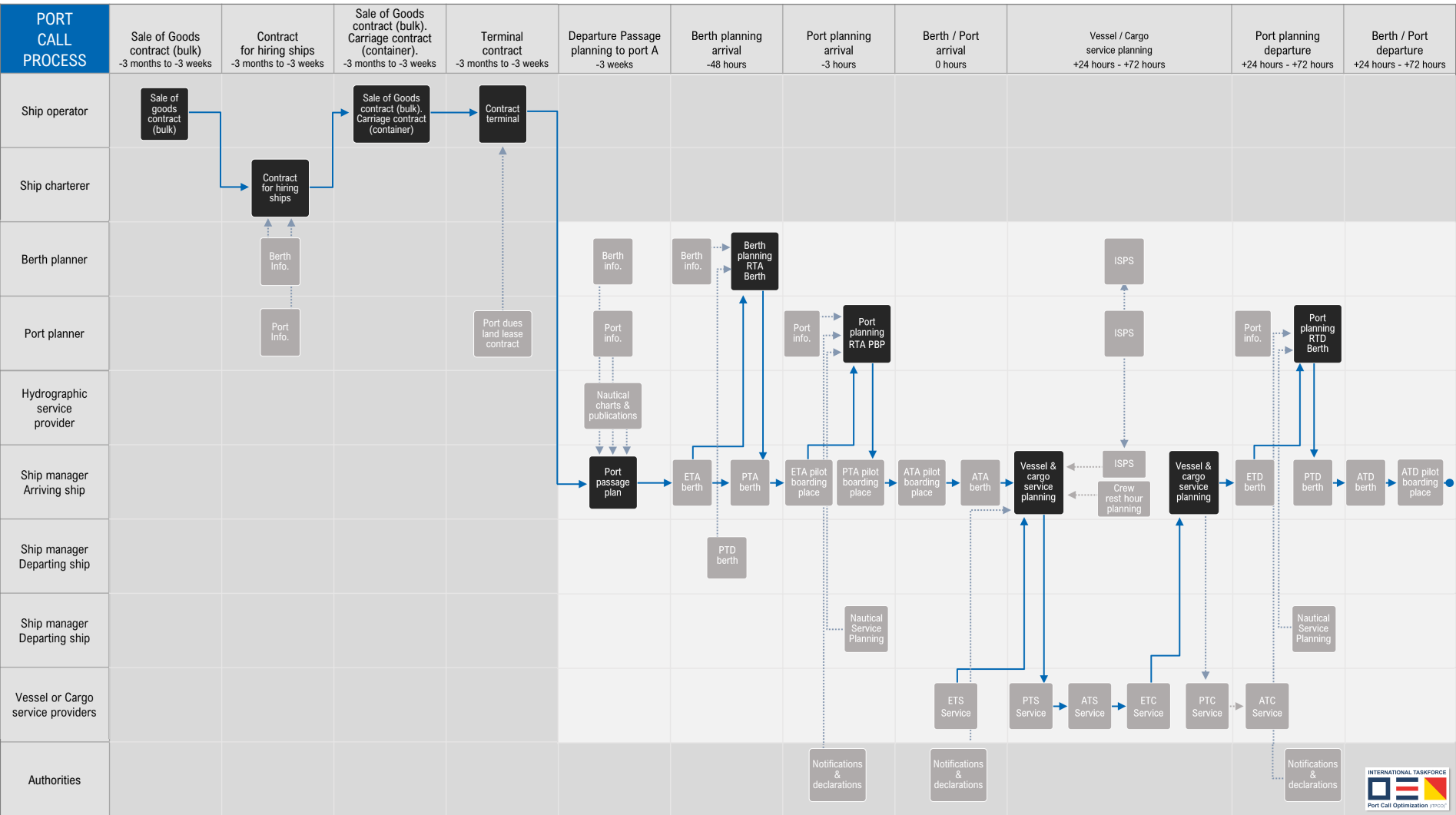


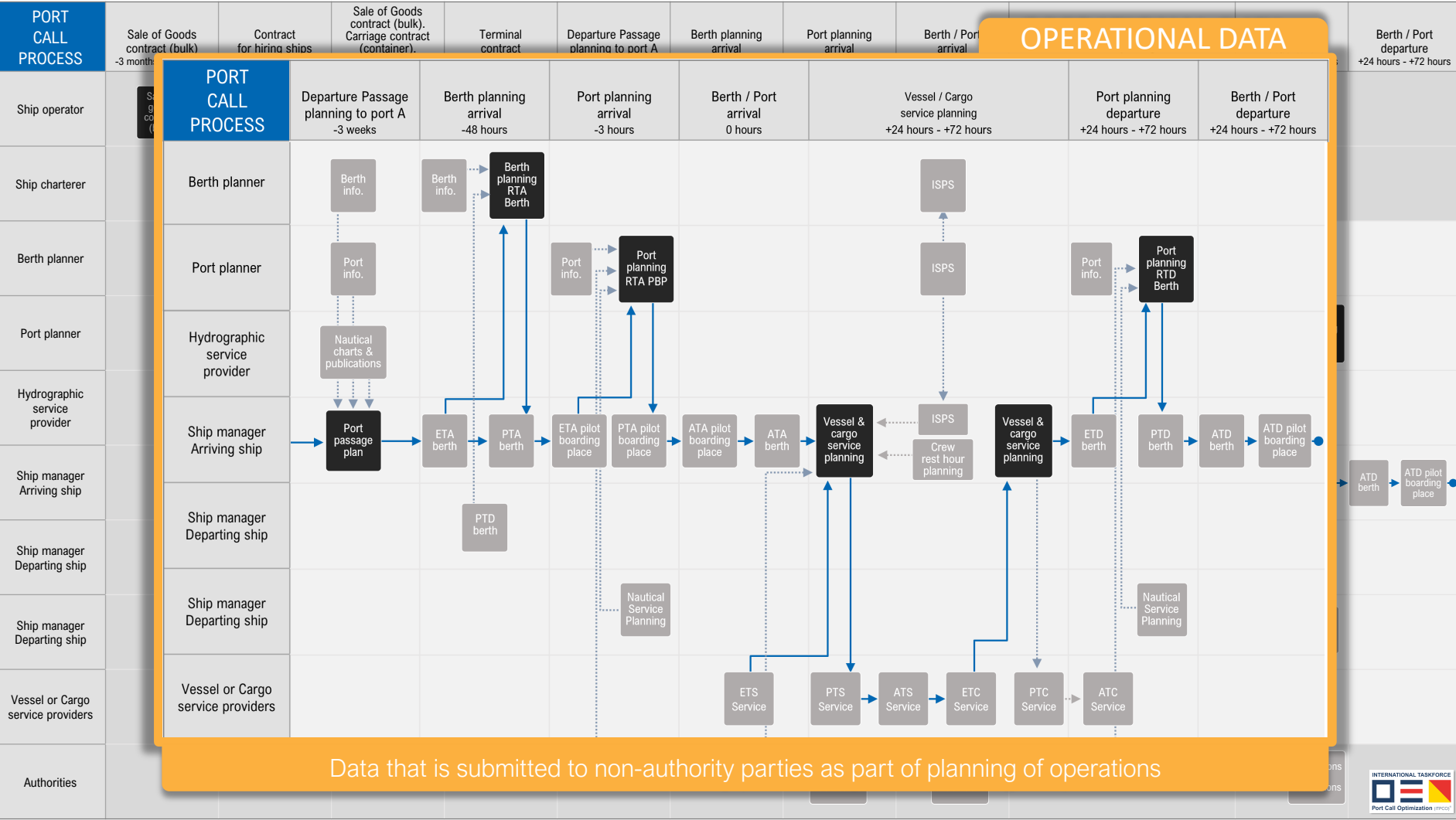


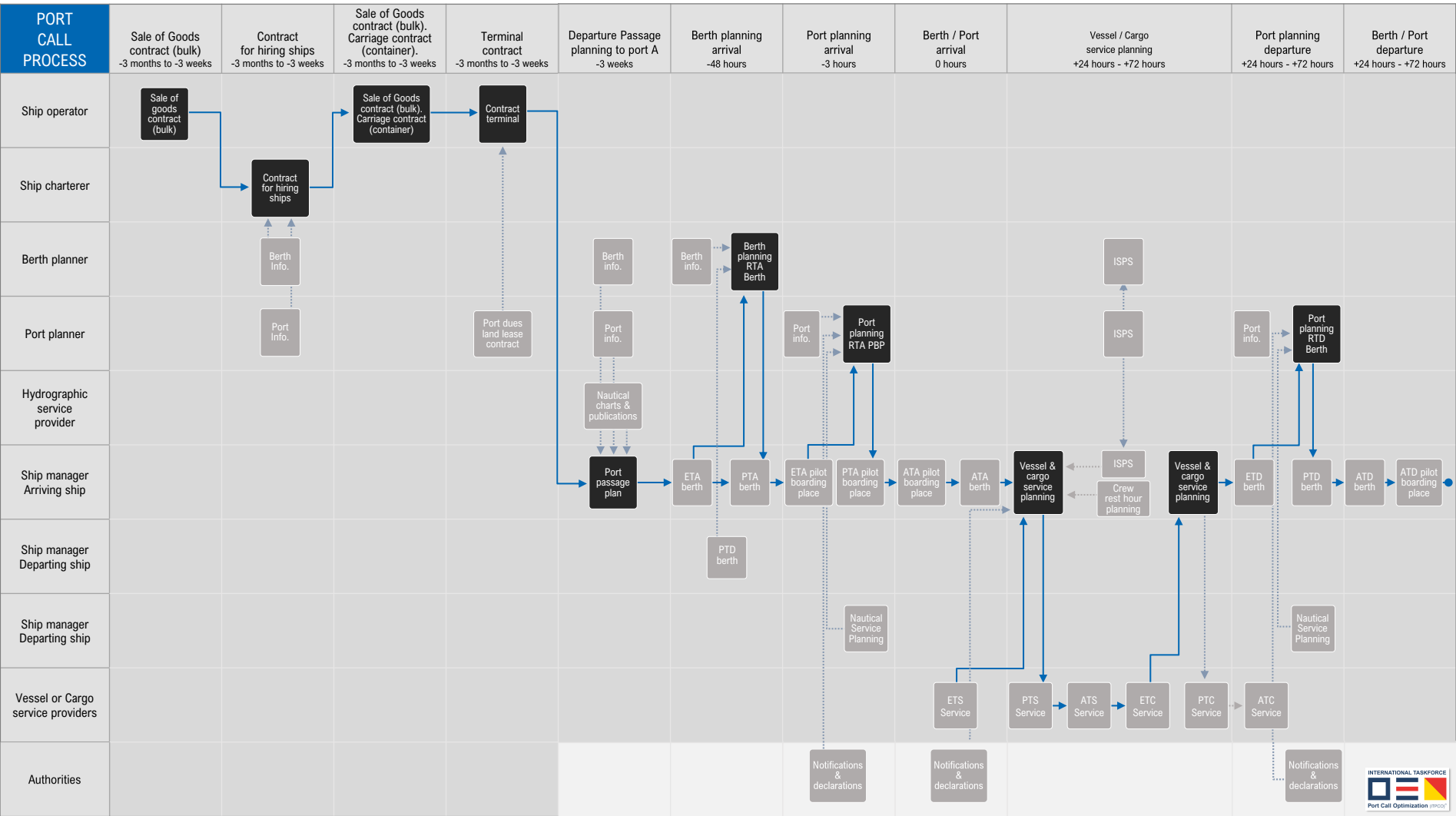


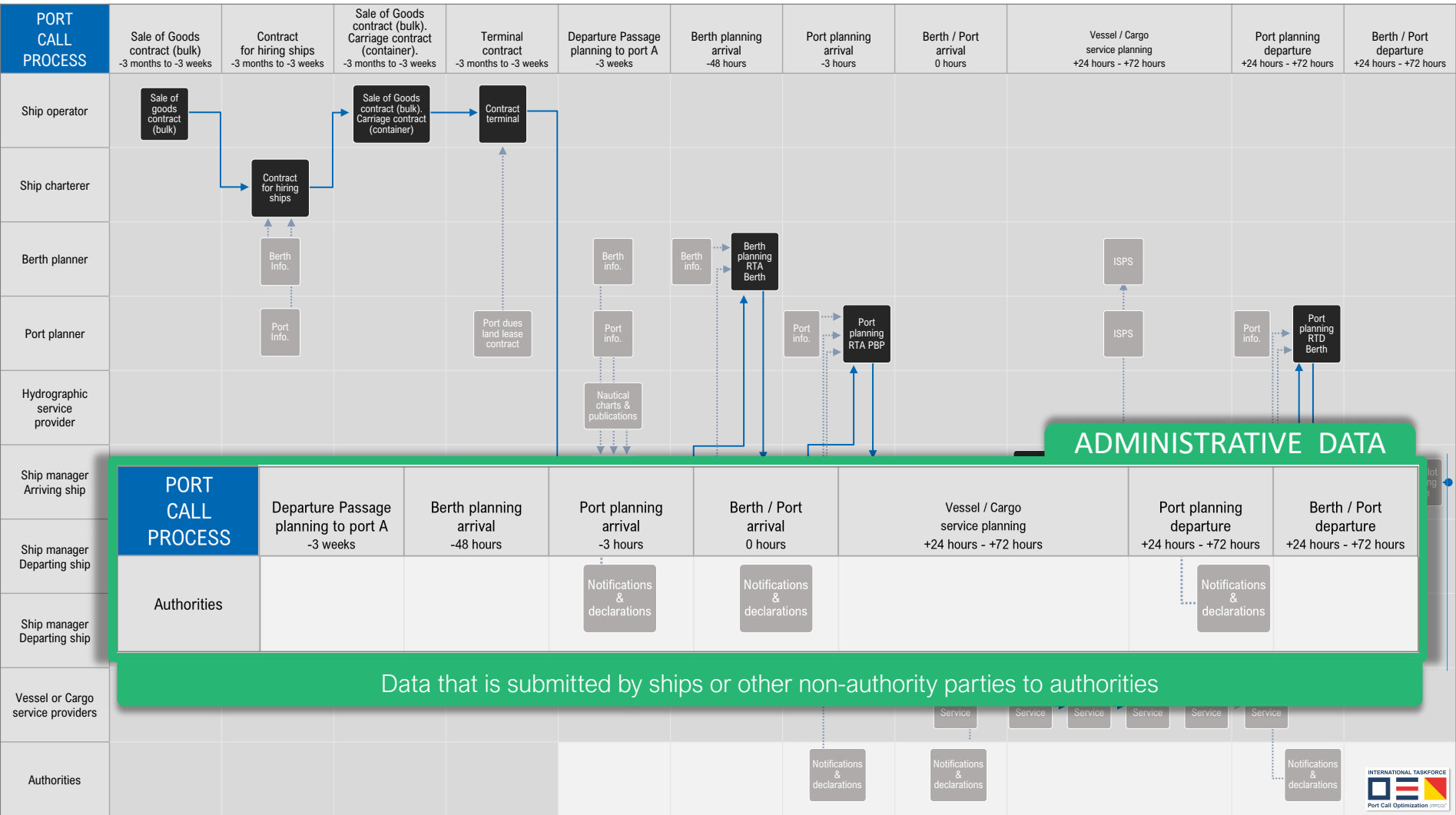
INTERNATIONAL TASKFORCE

Port Call Optimization (PICO)











# Compliant with standards of IMO / ISO / IHO

## NAUTICAL DATA



## OPERATIONAL DATA



## ADMINISTRATIVE DATA





For more information, you can download the IMO GIA Ship-Port Interface guide:

<https://greenvoyage2050.imo.org/wp-content/uploads/2021/03/Ship-Port-Interface-Guide-compressed.pdf>



You can also visit the web portal launched:

<https://greenvoyage2050.imo.org/ship-port-interface-measures-portal/>



For updates on the International Taskforce Port Call Optimization:

<https://www.linkedin.com/company/international-taskforce-port-call-optimization/>

INTERNATIONAL TASKFORCE



Port Call Optimization (ITPCO)<sup>®</sup>